



UNIVERSITY OF
WINCHESTER

APPLYING AS A MATURE STUDENT (21+)

**TOP 100 UNIVERSITY
WORLDWIDE FOR OUR
WORK IN SUSTAINABILITY
AND SOCIAL
RESPONSIBILITY**

University Impact Rankings,
Times Higher Education 2019

**SHORTLISTED FOR
UNIVERSITY OF THE YEAR**

*Times Higher
Education Awards 2017*

**HAPPIEST PLACE
TO LIVE IN THE UK**

Royal Mail
UK Happiness Index 2019

BE THE DIFFERENCE

OUR UNIVERSITY

We offer undergraduate, postgraduate and research degrees across a range of subjects within the arts, humanities, social sciences, business, law, digital technologies, sport, education, health and wellbeing. You will be taught by academic staff who are innovative and forward-thinking scholars at the forefront of their disciplines. Our reputation for research excellence is growing as we continue to deliver impact on a local, national and international scale.

We welcome mature students from a whole array of backgrounds, who enter with a variety of qualifications and work-related experiences.

As the University for Sustainability and Social Justice, our commitment to shaping a better world is at our very heart. Our values – Compassion, Individuals Matter and Spirituality – mean we will do everything we can to help you reach your full potential, flourish in an increasingly competitive job market and drive positive change in the world.

OUR WORLD

The University has declared a climate emergency. Future generations face a significantly different world – we all need to take action now to combat the global climate crisis. Universities have a responsibility to be future thinking and to prepare the next generation to do the same. We've aligned our Strategic Vision 2020-2030 with the United Nations' Sustainable Development Goals and our Climate Change Education Strategy means all our students graduate with an understanding of how climate change is relevant to their subject area and their everyday lives.

OUR CITY

Winchester is a beautiful, historic city located an hour south of London, less than an hour from the coast and just a 10-minute train ride from Southampton Airport. Thanks to its rich heritage and vibrant contemporary culture there is plenty to enjoy in the city and surrounding area, whether you will be living here or commuting. It's just a short 15-minute walk between the High Street and our King Alfred Quarter.

FACILITIES

YOUR LIBRARY SERVICE

Your Library Service gives you access to hundreds of thousands of books, and a huge range of online resources. You may like to use our range of eBooks, journal articles, online databases and our streaming services. Every subject has a dedicated Librarian who can help you with finding resources that are particularly useful for your course, in person, over the phone or via Microsoft Teams. In our libraries, Martial Rose Library (King Alfred Quarter) and West Downs Library (West Downs Quarter) we're here for your research and we offer areas for silent and quiet study. Have a look at our intranet pages where you will also find contact details for our enquiry service; library@winchester.ac.uk and our subject librarians. You can also follow us as @UniWinLibrary on Twitter, Facebook or Instagram for all the latest news and information.

YOUR IT SERVICES

Access to computers for study are available on the King Alfred and West Downs Quarters in the Libraries, Learning Café and Cyber Italia. In addition, self-service laptops for 24 hour free loans can be found in key locations, making study and notetaking much easier.

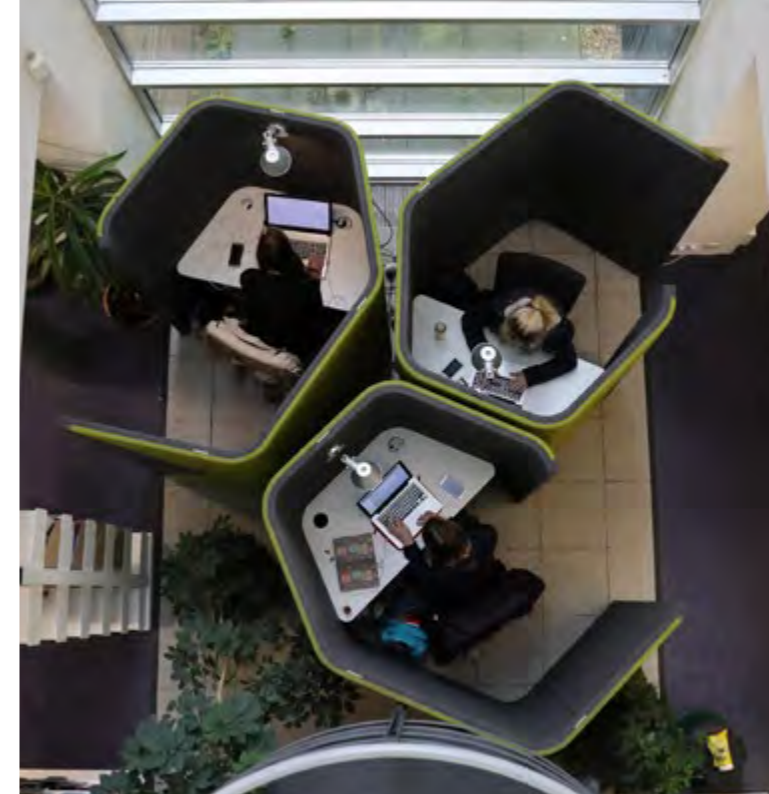
Excellent wi-fi is available over the whole campus to keep you connected on all your devices. Self-service multifunction printers are also installed on campus and can be accessed using your Student Card. IT queries and technical assistance is available at the Martial Rose and West Downs Libraries; alternatively email servicedesk@winchester.ac.uk and a Technician will contact you to offer help and advice.

Additional specialist facilities are available such as the Multimedia Centre (MMC) with TV and recording suites, audio, Journalism and open access MAC suites.

Students also have access to our MMC Loans Counter for free loans of Macbooks, media equipment (including cameras, lighting, tripods, recording devices etc) and other production accessories

FOOD ON CAMPUS

We lead the way in sustainable catering, providing food that is local, independent, fair and ethical; using organic, free-range and Fairtrade products where we can. There is a wide range of food options, including vegan and allergen-friendly, across our multiple award-winning catering outlets and the recently opened West Downs Centre has a number of new and exciting new outlets, including a vegan cafe. Please contact our team on foodoncampus@winchester.ac.uk to find out how we can cater for you during your time at Winchester.



COMMUTING STUDENTS NETWORK AT WINCHESTER STUDENT UNION

The Commuting Students Network was started to find a way to link commuters with other students who may share similar circumstances, and who don't always find it easy to immerse themselves in university life because of their outside commitments.

The group hosts get-together events monthly, holding them on different days and at different times to try and make them accessible to as many people as possible. The idea of these events is to give commuters a chance to meet face-to-face and build up friendships all across the University.

They also have their very own Commuting Network Lounge, with homely facilities designed to give commuting students a 'home from home'. The Lounge is situated next to Alwyn Car Park, about two minutes from the Kenneth Kettle Building. It has comfy sofas, dining table, microwave and fridge, shower, lockers, network PCs and printer. The Commuting Network have a strong and growing membership who support each other in person and through their members-only Facebook page. The Lounge is also open to students who are both mature and part time, even if they live less than 5 miles away (please note you must be both mature and part time to be eligible).

The Commuting Students Network is a representational network. Representational networks at Winchester Student Union are student-led groups which have an increased focus on advocating equality, diversity and accessibility within specific underrepresented student groups to directly improve the experience of students from the background they represent.

APPLYING AS A MATURE STUDENT

We welcome applicants who are over 21 and many have a wide range of qualifications and experience. If you are able to demonstrate recent study at Level 3 or above, for example achieving one A-level, then you may not need to fulfil the standard entry requirements for your chosen programme. Applications from mature students are considered on their own individual merit, and work and other experience can be taken into consideration. For mature students, achieving a pass at an Access course will fulfil the general entry requirement for the majority of our programmes.

All applications for full-time study are made through the Universities and Colleges Admissions Service (UCAS). Applications are made online by visiting www.ucas.com – click 'Apply'. For part-time study please visit our website to download a Direct Entry Application Form (www.winchester.ac.uk/directentryform).

COMPACT PARTNERSHIPS

The University of Winchester is committed to encouraging and supporting all students who have the academic potential and ability to progress to higher education. We have therefore formed partnership agreements with a number of schools and colleges.

In order to apply for the Compact scheme, students must currently attend one of our partner institutions in the southern region and meet certain criteria. The full criteria can be found at www.winchester.ac.uk/compact. Compact students are eligible for a pick'n'mix style financial support package and for reimbursement of their travel costs for attending interview.

After a Compact applicant has enrolled they will be able to claim up to £100 from one or more of the following: book voucher, mobile phone voucher, money towards childcare, money towards groceries and homewares, discounted bus pass and railcard. Compact students will need to provide receipts and will receive a bank transfer to reimburse the costs (up to a total of £100.) In order to be eligible for this support package, students will need to identify themselves as Compact students before their place is confirmed in August.

FEES AND FINANCIAL SUPPORT

FEES

We set our tuition fees at a level that makes sure you receive a degree experience which is high-quality and distinctive, with first-rate facilities. For further information please visit www.winchester.ac.uk/courses

ADDITIONAL COSTS

There may be additional costs associated with each course – for example textbooks/journals, research materials, field trips, stationery, travel, legal checks, membership or IT equipment. Please visit www.winchester.ac.uk/additionalcosts for more information.

FINANCIAL SUPPORT

The University of Winchester offers a range of awards and bursaries to help you pay for your studies with us and you do not need to pay them back. If you meet the eligibility criteria, you may receive more than one award. For further information please visit www.winchester.ac.uk/studentsandmoney



ACCOMMODATION

QUEENS ROAD STUDENT VILLAGE

Queens Road Student Village is a purpose-built, self-catering development with 400 study bedrooms. Students live in flats of five to eight bedrooms. All rooms are en-suite. The Village is located adjacent to the King Alfred Quarter.

WEST DOWNS STUDENT VILLAGE

West Downs Student Village is a self-catered residence just a few hundred metres away from the King Alfred Quarter. There are designated quiet areas and flats set aside for mature (21 and over) students. Residents have the benefit of a shop, laundrette, café and 24-hour vending with the university gym and catering outlets just a short walk away.

BURMA ROAD STUDENT VILLAGE

Burma Road Student Village has 350 en-suite study bedrooms arranged in flats of six to eight. There are adapted facilities for wheelchair users and students with hearing impairments. There are also laundry facilities and a University gym.

CATERED ACCOMMODATION

Each catered hall is a traditional hall of residence set up with rooms arranged along communal corridors with shared bathrooms and kitchenettes at various points. Many rooms boast beautiful views across Winchester and the South Downs and all rooms are larger than average single study bedrooms.

The catering element works on a part-board basis and each resident has a flexible weekly catering allowance automatically loaded on to their Campus Card. Residents use their allowance to pay for items in the University catering outlets as they wish.

For more details about the catering options available, please go to

www.winchester.ac.uk/accommodation-and-winchester-life/accommodation/catered-accommodation

Students are free to spend the allowance as they wish over the course of the week but should be able to cover approximately 14 meals a week. The kitchenettes in the halls provide facilities for cooking small meals and snacks.

There are a number of rooms adapted for hearing impaired students and Beech Glade is designated as a quiet hall. There are also areas set aside for mature (21 and over) students.

SELF-CONTAINED FLATS

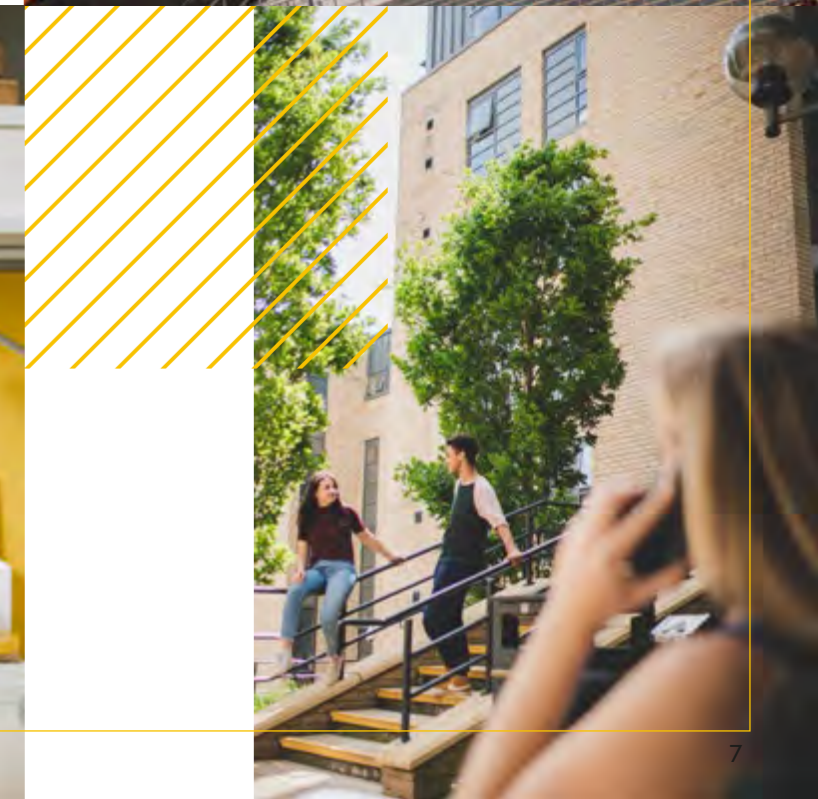
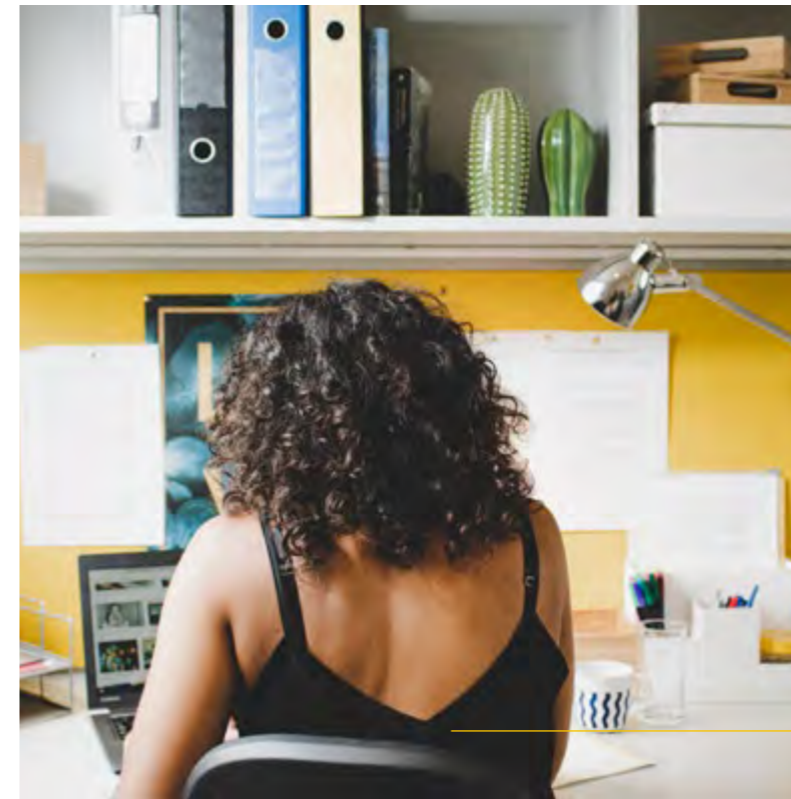
We have a small number of one and two bedroom self-contained flats on campus which are available for couples, students with young children and students with additional needs. There are also a small number of studios available at Cathedral Point.

UNIVERSITY MANAGED HOUSING (OFF-CAMPUS)

We manage a number of properties in Winchester, all approved by the City Council. They range in size from three to eight study bedrooms and come with varying facilities. Some have gardens, while others have off-road parking spaces. All have a washing machine and are furnished throughout. Some also have a tumble dryer and/or dishwasher and many properties have bedroom door locks for added peace of mind. Unlike many other private sector lets, students have individual licence agreements with the University. This means the University (via Student Housing Services) is their landlord and will deal directly with any maintenance issues or other concerns.

APPROVED UNIVERSITY NOMINATED ACCOMMODATION

Cathedral Point opened in summer 2018 and is situated on Andover Road, close to Winchester railway station. Riverside Way opened in September 2017 and is located in Winnall, close to the city centre. Both sites comprise approximately 250 en-suite rooms, arranged in flats of between six to eight students, as well as 61 studio flats. There is a large communal space for all residents to use and the management team often arranges a wide variety of social events to include all residents. The accommodation and the students' contracts are managed by a dedicated and professional team who work in partnership with the University to ensure all residents are supported throughout the duration of their stay.



SUPPORT

STUDENT ACADEMIC SUPPORT

University study offers a range of exciting opportunities to develop new knowledge, skills and understanding. The University's Student Academic Support team are here to help you to adapt to the differing requirements of higher education and to develop the strategies needed to study effectively and efficiently. Our team includes Academic Skills Advisers, English Language Tutors and Specialist Tutors who work with students with learning differences or ASC.

BACK TO STUDY

At The University of Winchester, we recognise that mature students can face particular challenges, whether returning to study after a long period of absence or as a total newcomer to higher education. Your first opportunity to learn more about studying at university is at our Back to Study event, which normally takes place in the week before Welcome Week. This is a great opportunity to meet fellow students and take part in some sessions focusing on key academic skills.

WORKSHOPS AND ONE-TO-ONES

Once enrolled on your programme, you can engage with a comprehensive programme of academic skills activities, designed for students from all levels and disciplines. This includes a range of workshops covering areas such as essay writing, academic referencing, exam revision and presentation skills. We also offer one-to-one appointments, where you can meet with a member of the team to discuss your work or skills development. Appointments can be face-to-face, via Microsoft Teams or telephone. We also have a wide range of online resources which are helpful when working from a distance.

MENTAL WELLBEING

The Mental Wellbeing Services is made up of a team of trained psychological professionals who are able to offer students information, advice and guidance on a range of issues relating to mental health and wellbeing. We provide a range of services including access to self-help resources and engagement with external support including NHS services, group workshops and courses on a variety of topics and short term mental health advice and counselling, which can be provided face-to-face or online.

STUDENT LIFE ADVICE

The Student Life Advice team offers a range of support to students to provide them with the best information, advice and guidance on topics regarding their general welfare and anything that may be negatively impacting on the student experience. We work with students on any general issues and aim to signpost or refer them to the appropriate support, whether that is homesickness, uncertainty about whether you are on the right course, issues with flatmates or other students, or concerns about your personal welfare. We also offer specialised advice on a number of subject areas like visas for international students, and support for care leavers and estranged students. Student Life Advisers offer scheduled one to one appointments and on the day bookable sessions as well as one-to-one appointments where we can explore your needs and help you to find the right form of support.

STUDENTS AND MONEY

The Students and Money team can assist, guide and support students with questions about funding their studies, aiming to make financial information as clear and accessible as possible.



DISABILITIES AND LEARNING DIVERSITY

If you have additional support requirements the disability advisers can work with you to ensure that your needs are met. They support students who live with disabilities including learning differences such as dyslexia, mental health conditions and long term health issues. The team offer a mix of pre-booked appointments and on the day bookable appointments.

WINCHESTER MUSIC CENTRE

The Music Centre is the University of Winchester's extra-curricular music department. Part of Student Services, activities are open to all students, staff and community members participate in. The Centre offers a wider variety of musical experiences including music groups of various genres, performances, community engagement projects and personal musical development in the form of vocal and instrumental coaching. You can also use our practice and rehearsal rooms.

CAREERS SUPPORT

The Careers Department offers impartial and up-to-date information, advice and guidance about occupations, graduate employment, further study/training, volunteering, and other opportunities.

CHILDCARE

There are various nurseries around Winchester, including the privately-owned West Downs Nursery which is located behind the Winchester Business School. Registered with Ofsted as a day nursery to take children between the ages of 6 weeks and 5 years, for more information email west.downs@childbase.com.

TRAVEL AND TRANSPORT

The University of Winchester promotes and supports sustainable travel and transport.

Winchester has excellent transport links including a direct train service to London Waterloo which runs every 20 minutes during peak times. The station is also well-served by trains running to and from Southampton, Basingstoke, Bournemouth, Weymouth, Brighton, the New Forest and the north of England.

The National Express coach service picks up from Winchester and serves various destinations across the UK. Ferry services from Portsmouth link to various ports in France, Spain and the Netherlands.

The University of Winchester is located close to the M3 which provides easy road access to the M25 and M27. Travelling to and from Heathrow and Gatwick airports is easy by both road and train. Southampton Airport is located 10 minutes away by train and offers services within the UK, the Channel Islands and mainland Europe.

PARK AND RIDE

Winchester has four Park and Ride car parks which serve the University well, students driving to Winchester are recommended to use the Park and Ride service to help reduce traffic congestion and air pollution in the city. The nearest bus stop is outside the Royal Hampshire County Hospital on Romsey Road, less than a five minute walk from both King Alfred Quarter and West Downs Quarter. Discounts are normally available on the Park and Ride service for students.

PARKING

The University encourages all students to use public and sustainable transport modes where possible and as such parking is only provided on campus for students where they comply with one or more of the University's eligibility categories for childcare, accessibility or carer.

TRAIN

The railway station is located within a 10-minute walk of the main campus and if you're a student, the 16-25 Railcard will give you access to 1/3 off Standard Anytime, Off-Peak (generally after 10am), Standard Advanced and First Class Advanced fares.

The 16-25 Railcard is open for anyone aged 16-25, or over 25 and in full-time study. The 26-30 railcard is available to anyone between these ages.

The University sells discounted South Western Railway season tickets, which can save students 30% on train travel to Winchester station each semester. The ticket can be used for unlimited journeys peak and off-peak between your starting station and Winchester station, and at evenings and weekends.

BUS

Bluestar and Stagecoach both offer discounts to students of the University of Winchester.

Bluestar offer a 20% discount on their services to students on the 30 day and 90 day network tickets. Stagecoach offer students semester and annual discounted rates of various values.

*All public transport provisions are subject to the travel companies' offers and their Terms and Conditions.

STUDENT UNION

Winchester Student Union is a membership organisation run for students, by students. The Union is an independent organisation which is dedicated to representing and supporting you as students, providing a wide range of opportunities for you to share your opinions and views about your student experience. The Union campaigns on important issues in response to your voice to improve your academic experience; for example access to funding or opening hours of campus facilities.

Students are elected each year to shape and develop the Student Union's policies and services and to coordinate the provision of welfare, activities, advice and representation. Alongside the Elected Officers, who are led by the President and two Vice Presidents, a team of dedicated core staff and student staff also help in the day-to-day running of all the activities and services of Winchester Student Union. With over 100 sports, societies and representational networks (including our Mature and Part-Time Students Network) and over 50 other engagement opportunities on offer, there's something for everyone at Winchester Student Union.

Student welfare is a priority for the Student Union; we understand the challenges students may face when going to University. The Student Union Advice Centre offers free, independent and impartial support and guidance on a range of issues that may be impacting upon your University experience. Specialising in supporting students through academic processes, the Advice Centre can also provide support on issues such as wellbeing, money and housing.

As well as being one of the largest venues in the city, The Vault at Winchester Student Union is a flexible use space, able to host a variety of events and activities. As a not-for-profit organisation, all money made from the Student Union bars, shops and launderettes goes directly back into funding your Student Union. Above all, Winchester Student Union promotes inclusion, participation and representation, here to ensure that your voice is heard and that you have the opportunity to get the most out of your student experience whilst studying at Winchester. For more details about the Union and its activities, to see the range of participation opportunities available, please visit our website: www.winchesterstudents.co.uk or find us on Facebook, Twitter and Instagram.



CATHERINE HOLLOWAY

WHAT MADE YOU CHOOSE WINCHESTER?

Although I had visited other universities, it was Winchester that most impressed me. The lecturers and students I met at the Open Day were so passionate about the course and I loved the campus, the buildings, the views, and the history.

WHAT WAS YOUR ENTRY PATHWAY INTO UNIVERSITY?

During my employment as a Teaching Assistant I had taken a Level 3 qualification in Early Years and this enabled me to be accepted onto the BA Education Studies (Early Years) programme.

WHAT WAS YOUR BIGGEST CONCERN BEFORE STARTING UNIVERSITY?

I was worried that as I was considerably older than most students I would not 'fit in'. I was also concerned that I would be out of my depth in lectures. I needn't have been concerned though as both my worries dissipated very quickly. I made friends with students of all ages, and during the Education Studies programme we received support and guidance from the lecturers and through the

Academic Skills sessions which were integrated into the course. I also had a student mentor for the first year; it was great to have someone who could listen, advise and give me the benefit of her experience of the course.

WHAT IS THE BEST PART ABOUT STUDYING AT WINCHESTER?

The University has a great feel about it, and you feel part of a community.

WHAT IS YOUR TOP TIP FOR GETTING THE MOST OUT OF UNIVERSITY LIFE?

Get involved, find new interests and meet people. Attend seminars, look out for upcoming events on the intranet, join a Research Centre. I started to attend the Centre for the History of Women's Education seminars early on in my course; being part of the Centre has not only broadened my knowledge and provided me with opportunities to be involved in active research but, most importantly, has given me a great group of friends.





UNIVERSITY OF

WINCHESTER