

International Student Information





Contents

Making Plans page 3

What do I need to do before I come?
To do list
Visas and immigration
Student visas
Police registration
Further information on immigration and visa application procedures
Arrival in the UK

Orientation Programme page 5

Living in the UK page 5

Finances
Living expenses
Transferring money to the UK
Opening a UK bank account
Working in the UK
Student accommodation

Family page 7

Can I bring my family with me to the UK?
Where will my family live?

Studies page 9

Studies at the University of Winchester
Programme Organisation and Academic Credit
Language and Study Skills support
Pre-sessional English Language Programmes

Support page 9

Student Services
Health
Students with disabilities
Faith

British Culture page 10

Life in the UK
Climate
Finding food to suit your needs

Social Life page 11

The Student Union
International Student Society
Winchester and surrounding areas

Useful Contacts page 12

General information
University of Winchester staff contacts



The University of Winchester

This information booklet will tell you about the opportunities available for international students at the University of Winchester. The University is located on a hillside campus near to the centre of the historic city of Winchester. University accommodation is either on campus or within a short walking distance.

The University has a population of more than 7000 students and more than 400 of these are international and European Union students, from all around the world. This means that your presence on our campus is important to us, because you bring the world to Winchester and because our campus community benefits tremendously from you being here. It is

also important to us that you engage successfully with your studies and that your experiences as a student at Winchester all prove to be very satisfying.

We work hard to make this happen when you come here and this booklet will give you advice and help you learn about the issues which students need to know about when they are planning to come to Winchester.

We look forward to seeing you soon,

Alasdair Spark

Director of Internationalisation



Making Plans

What do I need to do before I come?

This guide is designed to give you information that will help you to plan ahead for your time at Winchester.

We will write to you again before your arrival, enclosing a detailed list of what you will need to do in the few weeks before you arrive and what you will need to bring with you when you come. However, this information should help you now.

To do list

- Read this guide very carefully
- Complete all relevant forms/paperwork for the University and return them to us as soon as possible
- Organise your finances
- Pay your deposit to the University if you are coming from outside the EU
- Apply for a Visa if you are coming from outside the EU

Visas and immigration

If you come from outside the European Economic Area (EEA) and intend to come to the UK to study, you will have to make an immigration application to the UK immigration authorities in your home country for permission to come to the UK as a 'student'. Permission to come to the UK is called 'entry clearance'. You should wait until you have obtained entry clearance before you book any non-refundable travel tickets.

Student Visas

The University of Winchester is a Highly Trusted Sponsor on the UKBA register of sponsors.

If you require a Student Visa, you will be applying under the Tier 4 (General) Student category of the Points Based System. UK Visas and Immigration sometimes refer to Tier 4 (General) Students as 'adult students' in its documents. Under this system, you will need to show you meet a 40-point requirement. A valid Confirmation of Acceptance for Studies (CAS) is worth 30 points, and the final 10 points is satisfied by being able to meet the financial maintenance requirements. Full details can be found on www.gov.uk/ukvi

If you are coming to study for a maximum of six months (eleven months for English language programmes) you may have an alternative which is to come as a 'student visitor'. Student visitors are allowed to study part-time, but have to leave the UK at the end of six months. They are not allowed to do any kind of work or work placement, and are not allowed to apply for more time in the UK if their studies are extended. Further information about this category can be found at www.gov.uk/ukvi

Police Registration

If your visa requires you to do so, you must register with the police within 7 days of arrival in the UK. The International Student Officer will assist with Police registration on your arrival at the University.

Further information on immigration and visa application procedures

UK Visas and Immigration - contains up-to-date information, advice and guidance on applying for visas for all immigration categories: www.gov.uk/ukvi

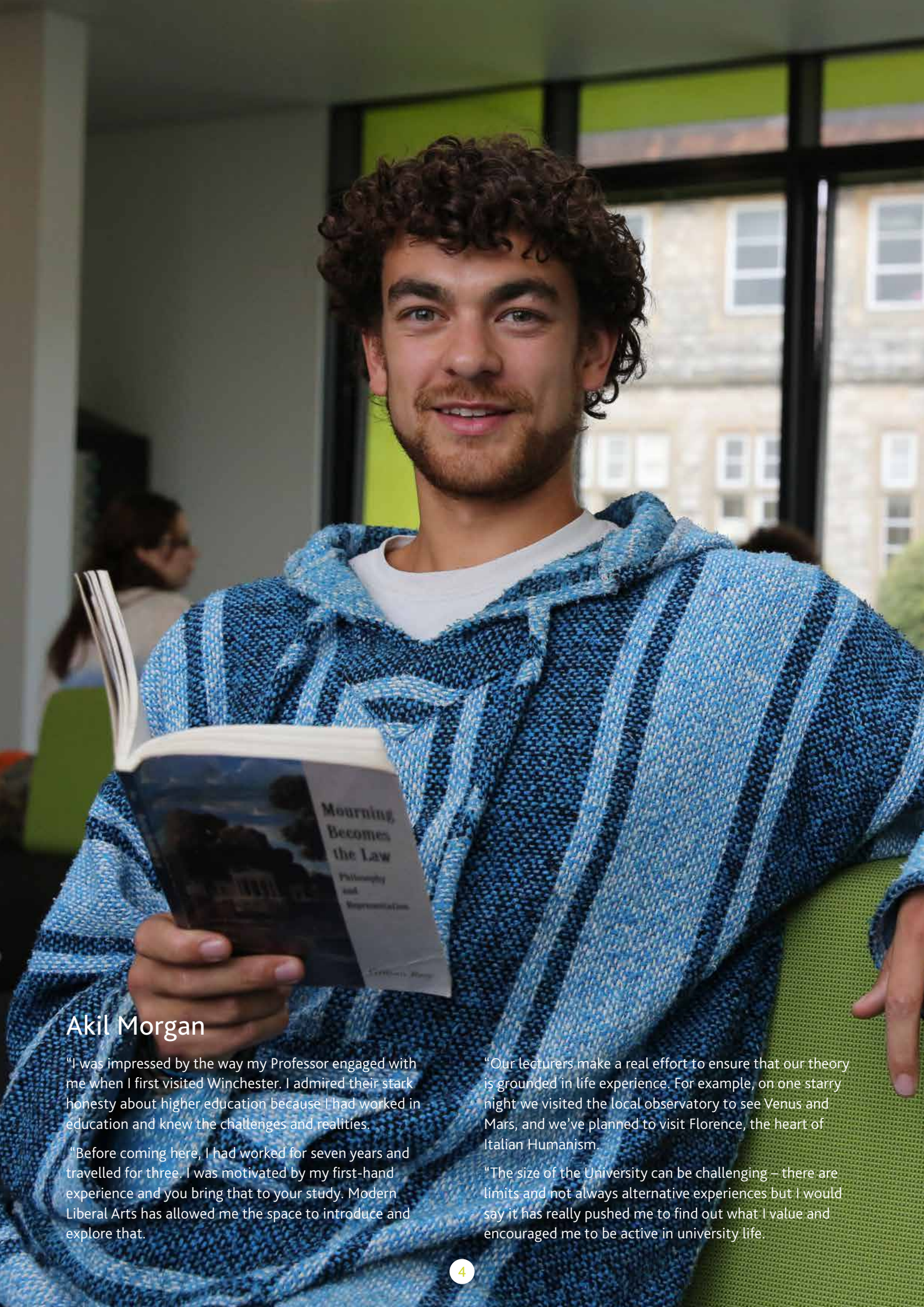
UKCISA Council for International Student Affairs - gives advice on immigration procedures as well as on funding and fees status issues: www.ukcisa.org.uk

UK Embassies overseas - links to the Foreign and Commonwealth Office's list of British Embassies, High Commissions and Consulates overseas: www.fco.gov.uk

The British Council - www.britishcouncil.org

Arrival in the UK

About a month before your arrival you will be sent a 'Welcome Pack' and an International Student Handbook containing detailed information about what you need to bring, how to travel to Winchester and what to do when you first arrive. This will provide you with your final joining instructions and information on the first few days of your stay in Winchester. It will also contain information on how to register online before you come to the UK in order to complete the first part of our enrolment process.



Akil Morgan

"I was impressed by the way my Professor engaged with me when I first visited Winchester. I admired their stark honesty about higher education because I had worked in education and knew the challenges and realities.

"Before coming here, I had worked for seven years and travelled for three. I was motivated by my first-hand experience and you bring that to your study. Modern Liberal Arts has allowed me the space to introduce and explore that.

"Our lecturers make a real effort to ensure that our theory is grounded in life experience. For example, on one starry night we visited the local observatory to see Venus and Mars, and we've planned to visit Florence, the heart of Italian Humanism.

"The size of the University can be challenging – there are limits and not always alternative experiences but I would say it has really pushed me to find out what I value and encouraged me to be active in university life.

Orientation Programme

International and EU students will be asked to arrive on the weekend of 12-13 September, with a full orientation programme beginning on 14 September. During the orientation, you will:

- Be welcomed to Winchester and to the University
- Enrol with the University, your Faculty and your programme of study
- Prepare to study in the UK context
- Receive important and essential information about life at Winchester, culture shock, the computer systems, email and much more
- Meet your International Student Officer and fellow students
- Meet your tutors and the support staff

- Pay your fees and accommodation bills
- Receive your ID card and Student Union card
- Register with a doctor
- Find out how to open a bank account
- Settle in and familiarise yourself with your new environment before lectures start
- Join a tour of Winchester
- Have the opportunity to visit another UK city as part of an organised excursion
- And importantly, make friends and have fun!

It really is an excellent opportunity to 'find your feet' when you first arrive and you must ensure that you participate in all that has been organised for your benefit.

Living in the UK

Finances

It is most important that before you start your programme of study you are certain that you have sufficient financial resources to cover all of your expenses for the duration of your programme.

International students (who require a visa) are required to pay a deposit of £2,000 of the first year's fees. Once the deposit has been received, the University will issue a Confirmation of Acceptance for Studies (CAS) to submit with your visa application.

Living expenses

As well as money to pay your tuition fees, you will need enough money to pay for your accommodation and living expenses. Basic living expenses for one academic year (based on 12 months) are approximately £8,500.

Housing/Accommodation	£4,000-£5,000
Food	£2,000
Personal	£500
Books/Equipment/Other	£400
Travel (including one return flight)	£1,200
Other	£600
Total	£8,500 approx (for 12 months)

It must be emphasised that these figures are only approximate and are relevant to the Winchester area only. The amount you need and the amount you spend will depend on your personal lifestyle. Also, costs may be lower if you return home over the summer vacation.

For the purposes of entry clearance, students applying for courses longer than 12 months will be required to show that they possess sufficient funds to pay the balance of their first year of tuition fees, plus an additional sum of £7,200 to support the first nine months of living expenses.

Transferring money to the UK

Bringing money into the UK is straightforward if you plan ahead. There are a number of ways of getting money into the country and the various options open to you are listed below:

Credit card – most banks in the UK will accept MasterCard, American Express or Visa cards. These can be used to withdraw cash from ATMs (cash dispensing machines)

Travellers cheques are very useful because they enable you to obtain money before you have organised a bank account

Electronic transfer of funds – this is the easiest and quickest way to send money from a bank in your country to one in the UK. You can use this method once you have opened a bank account in the UK.

Opening a UK bank account

If you are in the UK for more than six months you will probably find that you need to have your own UK bank account.

Speak to your bank in your home country before you leave. Ask their advice about opening a bank account in the UK. Find out what methods of transferring money are available, including the security of each method and the costs involved. Ask if your home country bank has a special relationship with a bank in the UK, and whether this can help you with setting up an account or in any other way. Also, find out if you can use a cash/credit card from your home country bank in UK bank machines, to take money out of your account in your home country.

You will be given more information on banks in Winchester during the Orientation Programme.

Working in the UK

Students are advised that the main purpose of their stay in the UK is to further their education. However, you may wish to take up a part-time job whilst you are here. International (non-EU) students do not need to obtain a work permit in order to work but they are restricted to working either a maximum of 10 hours a week, or 20 hours a week depending on programme of study. There is no restriction on the number of hours worked during vacation periods. More information on how to find a part-time job will be given to you on arrival. EU students may work in the UK and there is no restriction on the number of hours worked. EU students from the most recent accession states (Bulgarian and Romanian nationals) should check www.gov.uk/browse//visas-immigration/eu-eea-commonwealth for the most up-to-date information.

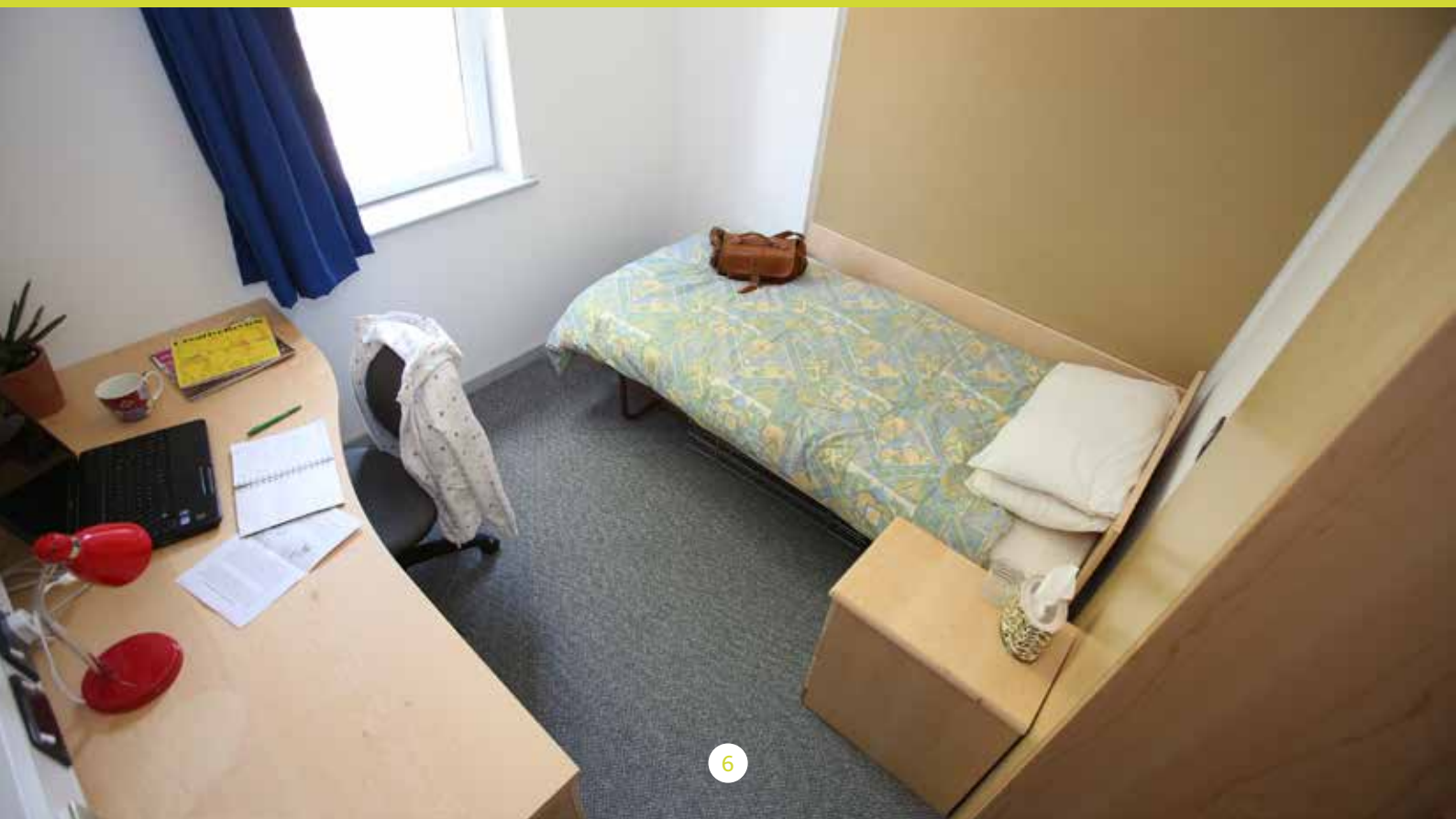
Student accommodation

All international students (non-EU) are guaranteed university managed accommodation for the duration of their studies provided they apply by 1 August of the year of entry. We try to accommodate international students with UK students so that, as far as possible, a variety of different nationalities are living together. All EU students (including UK students) are guaranteed university managed accommodation for the first year of their studies, also provided they apply by 31 May of the year of entry.

Students can request the type of accommodation which is best for them. The choice is either to live in the student villages of West Downs, Burma Road and Queen's Road which are self-catering, where students can cook their own food and rooms are available for the whole academic year, or to choose the catered package where students eat in the University Centre. This catered contract is only for 30 weeks of the year as students are not able to stay in halls of residence over the Christmas or Easter holidays. This is an important point to consider when you decide what type of accommodation suits your needs.

Applications for accommodation must be received by 1 August of the year of entry in order to be covered by this guarantee. However, we will endeavour to accommodate students who apply after the 1 August deadline.

The University can provide a kitchen set which includes a wok, saucepan, plate, mug, bowl, wooden spoon, spatula and cutlery. They can also provide a bed linen pack including duvet, duvet cover, pillow, pillow slip and single sheet. These are available to purchase on your arrival or can be pre-ordered when you apply for your accommodation. Information on how to apply for housing is included in this pack.



Family

Can I bring my family with me to the UK?

Yes, in certain circumstances. Broadly speaking, if you are applying for a student visa under Tier 4 (Adult/General Student), the only family members who can apply as your 'dependants' are your spouse, civil partner, unmarried or same-sex partner and children under 18 years of age. If you already have immigration permission under the old immigration system prior to the points-based system, unmarried partners and same-sex partners cannot be included as dependants unless the main applicant (the student) applies under the new Tier 4 system.

There are further conditions placed on dependants – a very useful guide can be found on UKCISA's website

www.ukcisa.org.uk/student/info_sheets/your_family.php. It is also important to bear in mind that you will need to show

that you have adequate financial means to maintain your dependants. Currently, the figure set per dependant is £460 for each month to a maximum of £4,140 for programmes lasting 9 months or more. Again, the website above, along with www.ukvisas.gov.uk will provide you with up-to-date information on dependants and what you should do if you are applying under Tier 4 or already have immigration permission in a different category.

Where will my family live?

The campus has some housing for families. If you decide to bring your family, it is essential that you contact the Housing Office well in advance of your final decision and certainly well before your arrival. If the University is unable to offer you and your family a place in our housing, it should be able to assist you in finding housing in the local area.





Netta Chalermplanupap

"I am originally from Thailand, but was studying in America before I came to the UK. A friend recommend Winchester to me, as they had studied here as part of an international exchange, and I heard that it had a really good education course. The community is more diverse than I expected which is great.

"During the application process I was assigned an international advisor at Winchester, her and her team were really helpful. I emailed her a lot about my visa and she was great at reassuring me.

"I have regular one-to-one meetings with my tutors, so I can

raise any issues with them. It took me a while to get used to a different grading system when I arrived in the UK so these meetings were important. There are also study skills workshops you can go to, which offer help with things like essay writing.

"Through my course I can do a volunteering module and there's the opportunity undertake work experience. I've also been able to take part in the wider University community by playing volleyball, swimming and socialising with the student International Society. This is really helpful if anyone is feeling homesick!"

Studies

Studies at the University of Winchester

You may find, as many international students do, that the teaching methods used by lecturers are very different to any you have been used to. The relationship between staff and students is often relaxed and informal and a high importance is placed on students' abilities to take responsibility for their own education and organise their own time. The UK system assumes that students will develop independence and individuality.

Degree programmes consist of a series of lectures, seminars and tutorials. In addition to timetabled activities, much emphasis is placed on private study and you will be expected to spend at least as much time studying on your own as being taught.

Programme organisation and academic credit

Programmes at Winchester are made up of individual modules. Successful completion of each of these modules gives you academic credit. We can advise you on what this credit is equal to in terms of your own country's system or

in terms of international agreements such as the European Credit Transfer System. We also make this clear on your final transcript.

Language and Study Skills support

Language and Study Skills support including one-to-one tutorials, group workshops and individual language modules are available for international students throughout the duration of their studies at the University.

Pre-sessional English language programmes

The University also runs pre-sessional English language programmes for international students. Those who have not met the University's language entry requirements will be asked to attend a programme appropriate to their needs prior to commencing their main programme of study. The aim is to enable students to study effectively and independently in English.

For further information and an application form please contact the International team on Donna.Rose@winchester.ac.uk

Support

Student Services

Our aim at the University of Winchester is to make your stay here a happy and memorable experience.

The Student Services team provides a Student Advice, Wellbeing, Academic Careers and Development, Foundation Music and Chaplaincy service for all students.

The International Student Officer is located in the Internationalisation Centre and is available to provide you with assistance on a wide range of issues from information on travel and day-to-day living in the UK to personal issues, visa information and help with extending your leave to remain in the UK.

Health

If you are staying in the UK for more than six months, you will be entitled to free NHS (National Health Service) medical care for the duration of your time here as a student. If you are on a course of less than six months then you should obtain private medical insurance to cover your stay. Please see Student Services for details of how to register with a doctor. The web address at the end of this booklet for more information on the National Health Service in the UK.

Students with disabilities

If you have a disability you must contact our Head of Wellbeing (on email at Lesley.Black@winchester.ac.uk or telephone +44 (0) 1962 827439) as soon as possible to discuss your support needs and our ability to meet them. You must provide evidence of your disability, such as a medical

letter or psychologist's report. This is a requirement for all students.

You are advised to seek funding from your home country to cover the cost of any non-academic support that your disability may incur as unfortunately, non-UK students are not eligible for government funding to help with disability support. The University of Winchester can, however, provide academic support for students with disabilities. You are reminded that if you have a disability you must contact the Head of Wellbeing before arriving in the UK to discuss any individual support provision which needs to be arranged. You will be required to provide evidence of your disability in advance of your arrival.

Faith

There is a Chaplaincy team who support everyone who is part of the University community, whatever their faith, including those with no faith.

Students from many different faith backgrounds come to Winchester. The Chaplaincy team work with them to help them connect with their local faith communities, to link up with others from a similar background and belief, and to help provide the support their needs during their time here.

There is a Christian chapel and a Muslim Prayer room on campus, and a faith space is planned for use by other faith groups.

If you have any questions, or would like to make contact with the Chaplaincy team before you arrive, please e-mail chaplaincy@winchester.ac.uk.

British Culture

Life in the UK

We hope that you will enjoy the challenge of living in a new culture. Most British people are friendly when you get to know them but cross-cultural friendships can take time to build. You may experience culture shock during your first few months in the UK.

Culture shock is more than just homesickness - it is a totally normal reaction to living in a different country. You may find that you will go through many changes of mood and attitude in the first few weeks and months of being in the UK.

At first you may go through a 'honeymoon period' where everything is new, different and exciting. As time moves on, these new experiences (for example different food, different weather, different customs) can change from being interesting and exciting to being annoying, confusing or depressing. Hopefully this stage of adjustment will not last too long. As you start to adapt to being here, your confidence will grow as you begin to understand British culture and the environment you find yourself in. At that point you should start to enjoy and appreciate the new life you are leading and gain much from it.

If you really struggle with homesickness or culture shock you will not be left to cope alone. The International Student Officer is happy to listen and will help you to find ways to work through it. There is also a session on culture shock and overcoming homesickness during the orientation.

Climate

In the UK we often talk about the weather. This is partly because talking about the weather is a social 'ice-breaker' and, being a nation of reserved people, we need to find something safe to talk about when we first meet. Also, as you will learn, the weather is very changeable so there is always something to say!

Being in the south of the country, Winchester enjoys some of the best weather that England can offer, but it can still be unpredictable. During the summer months temperatures occasionally reach 30 degrees centigrade/celcius. Spring is usually sunny and cool. Autumn is cooler and sometimes wet and windy. January to February is the coldest time, when the temperature is sometimes below freezing. Snow is only an occasional hazard. Also, for rainfall it is advisable to have an umbrella!

Average monthly temperature: October to January 6-8°C, February to May 11-15°C, June to September 15-22°C.

Finding food to suit your needs

Although every single item of your own national food may not be available in the UK, it is surprising what can be found.

A supermarket is probably a good place to start because it is self-service and you can walk around and choose items that you like. Most supermarkets supply international foods and there are also specialist food stores in Winchester and Southampton.



Social Life

The Student Union

All students at the University of Winchester automatically become members of the Student Union, a democratically run organisation which represents students' interests at all levels within the University. The Union provides a wide range of sporting opportunities including all the major outdoor games and a number of non-sporting societies such as the Radio Society and the Animé and Manga Society. The University has a sports hall, fitness suite, dance studio and sports training fields.

During the University enrolment process you will meet members of the Student Union and will receive your NUS card which, as evidence of your student status and membership to Winchester Student Union, can be used to gain discounts on various products, services and in shops. You also have the chance to obtain a Winchester Student Union Student Activities Card, enabling you to participate in all the Student Union's clubs and societies.

The International Students' representative is an elected member of the Student Union Council. His/her role is to

further the interests of international students throughout the University.

The International Students Society

The International Student Society is run by students through the Student Union. The role of the society is to help integrate international students into life at Winchester, providing a social group, day trips and other events. They also run a scheme for new international students to be provided with a mentor who is an experienced student, for their first few months to help them settle in.

Winchester and surrounding areas

The city of Winchester offers something for everyone. It is rich with character and history, and bustles with good shopping, restaurants and night life. It is also one of the safest places in Britain with low crime rates and pleasant surroundings. It is only an hour away from London and has excellent rail and road connections to the rest of the country.

Around Winchester there is a huge amount to see and experience, from the historical dockyards of Portsmouth to the tranquil New Forest and beautiful Jurassic coastline.



Useful Contacts

General information

UKCISA (UK Council for International Student Affairs)

Tel: +44 (0) 207288 4330

www.ukcisa.org.uk

UK Visas and Immigration

www.gov.uk/ukvi

Foreign & Commonwealth Office

www.fco.gov.uk

Embassy List

www.embassyworld.com

Student Finance England – information for EU students

Tel: +44 (0) 141 243 3570

www.gov.uk/student-finance

The British Council

www.britishcouncil.org

www.educationuk.org

Universal Currency Converter

www.oanda.com

Interfaith Network for UK – promoting good inter-faith relations

www.interfaith.org.uk

National Health Service (NHS)

www.nhs.uk

University of Winchester staff contacts

University of Winchester switchboard

Tel: +44 (0) 1962 841515

www.winchester.ac.uk

International Recruitment

Tel: +44 (0) 1962 826427

Email: Donna.Rose@winchester.ac.uk

International Student Officer

Tel: +44 (0) 1962 827482 Fax: +44 (0) 1962 827515

Email: Geoff.Titchener@winchester.ac.uk

Student Advice

Tel: +44 (0) 1962 827341

Email: student.advice@winchester.ac.uk

Head of Wellbeing

Tel: +44 (0) 1962 827439

Email: Lesley.Black@winchester.ac.uk

Disability

Tel: +44 (0) 1962 827341

Email: disability@winchester.ac.uk

Housing Services

Tel: +44 (0) 1962 827533

Email: housing@winchester.ac.uk

English Language Teaching and Support Unit

Tel: +44 (0) 1962 827546

Email: eltsu@winchester.ac.uk

Course Enquiries and Applications

Tel: +44 (0)1962 827234

Email: course.enquiries@winchester.ac.uk

Chaplaincy

Tel: +44 (0) 1962 827063

Email: chaplaincy@winchester.ac.uk

Please understand that this guide is for your information and is not an official offer of a place at Winchester.

Thank you for taking your time to read this guide. Please do not hesitate to contact us if you require any further information – we will be happy to help and we look forward to welcoming you here if you are accepted at the University of Winchester.



