



THE UNIVERSITY OF  
WINCHESTER

# International Student Handbook 2011



# Contents

<b>Introduction</b>	Page 1
<b>International students "to do" list</b>	Page 2
<b>International students "to bring" list</b>	Page 3
<b>Visa information</b>	Page 4
<b>Do I need a visa?</b>	Page 5
<b>Restrictions on bringing meat and food in to the UK</b>	Page 6
<b>Money on arrival</b>	Page 6
<b>Arrival in the UK</b>	Page 6
<b>Arriving at the University</b>	Page 8
<b>Orientation programme</b>	Page 8
<b>Making contact with home</b>	Page 9
<b>Finances</b>	Page 10
<b>Part-time work in the UK</b>	Page 11
<b>Dependants</b>	Page 11
<b>Accommodation</b>	Page 12
<b>PAT testing of electrical items brought into halls</b>	Page 12
<b>Computer operating systems and IT support</b>	Page 13
<b>Health</b>	Page 13
<b>Students with disabilities or learning differences</b>	Page 14
<b>Academic life in the UK</b>	Page 14
<b>Financial budgeting</b>	Page 15
<b>Useful information/contacts</b>	Page 16
<b>University of Winchester staff contacts</b>	Page 16



# Introduction



## **Welcome to the University**

Congratulations on securing your place at the University of Winchester. We are very pleased that you have chosen us for your studies. You will be joining a community of about 5,600 students including approximately 400 students from many countries around the world. Whether you are coming to us for an undergraduate programme, a language programme, postgraduate studies, as an exchange student or for research, we are committed to helping all our international students settle in to the University and look forward to welcoming you in September.

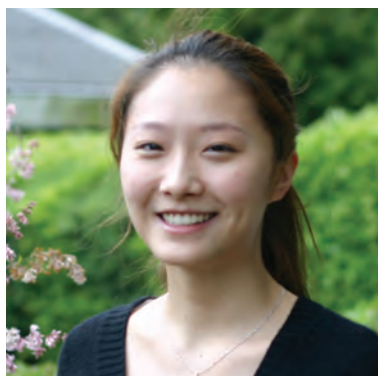
Here at Winchester, we have a strong network of support and we continually strive to provide a dynamic, supportive and stimulating environment. Winchester is a safe and compact city – the University campuses, accommodation and city centre are all within walking distance and it is easy to find your way around.

We are sure you will find student life new and exciting, but at the same time you may also find you are slightly bewildered, especially if you are moving to the UK for the first time. We aim to make sure that, right from the start, you have access to any support you might need - academic, personal and medical - from people who are easy to contact and who can give you friendly and expert guidance when you need it. In the meantime, please read this handbook thoroughly as the following information will be useful to you as you plan and prepare for your student life in the UK. This booklet is available on our website with live hyper-links to useful websites for your convenience.

We look forward to meeting you.

## **Sunita Martin**

International Student Officer



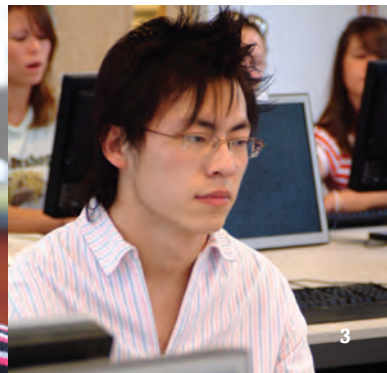
# International students “to do” list

- Read the “Visa information” and “Do I need a visa?” section on pages 4-5 carefully
- Apply for a visa if you are required to do so
- Apply for accommodation before **16 December 2011**
- Book your flight to arrive on Thursday **12 January 2012**
- Complete the online booking form for our free Airport Pickup Service (see page 6)
- Register on-line (see page 5 of the Induction Pack)
- Buy medical insurance if you will be a student here for less than six months (not applicable to EU students for any duration)
- Insure your personal belongings (this can be done on arrival, but you may want to buy travel insurance for the journey)
- Organise cash, travellers' cheques, credit and debit cards for your journey and the first two weeks of your stay
- Obtain a bankers' draft or transfer money if you have been able to open a UK bank account before you arrive in this country. This is usually possible if your own bank has a reciprocal arrangement with a UK bank but most students will open a bank account after arrival in the UK
- EU students may wish to apply for a Tuition Fee Loan – please obtain further information from the following link: [www.direct.gov.uk/en/EducationAndLearning](http://www.direct.gov.uk/en/EducationAndLearning)
- Join our Facebook group for new international students. Meet your International Student Buddies and other new students; find out what to expect in your first weeks in Winchester!  
**Facebook: University of Winchester International Students**



## International students “to bring” list

- A valid passport with a valid visa. Keep a photocopy of your passport information pages and visa page separately in your luggage
- Birth Certificate and official translation if not in English
- Confirmation letter, CAS email from the University of Winchester and any other University documentation (e.g. confirmation of accommodation)
- Proof of financial means. The Immigration Officer has the right to ask you for an updated statement from the bank account you used to support your application for a visa
- Original certificates for all the qualifications that were listed in your Confirmation of Acceptance for Studies (CAS) email, including any translations. We will ask to see these at enrolment.
- Students from certain TB-endemic countries will be required to undergo a TB screening on arrival in the UK. This can be a lengthy process and you may be able to bypass this procedure if you already have your screening certificate with you in your hand-luggage. To find out more about chest x-rays, ask at your local British Embassy when you are applying for your visa. For more information visit the UKBA website: [www.ukvisas.gov.uk](http://www.ukvisas.gov.uk) > **Visa information and guidance > Health(tb)screening**
- Any other official paperwork/documentation which you think may be in any way helpful when you report to immigration at the airport, enrol at the University and open a UK bank account
- Cash, travellers' cheques, credit and debit cards for first few weeks and banker's draft to deposit into new bank account if applicable



# Visa information

Students who need a visa to study in the UK will in most cases need to apply under Tier 4 of the Points-Based System (PBS).

Students will have to apply for a "General Student" (Tier 4) visa. See [www.ukba.homeoffice.gov.uk](http://www.ukba.homeoffice.gov.uk) for detailed advice and links to the relevant visa application forms. To obtain a visa, you will need to score a total of 40 points on your application, made up as follows:

- A valid Confirmation of Acceptance of Studies (CAS) from the University worth 30 points. The CAS is available from our Admissions Department after payment of your initial fee deposit of £2,000. Please contact [course.enquiries@winchester.ac.uk](mailto:course.enquiries@winchester.ac.uk) and note that it can take a week to issue a CAS, particularly during busy periods
- Evidence that you have enough money for your tuition fees and living expenses which is worth 10 points. Check [www.ukba.homeoffice.gov.uk/visas-immigration/studying/adult-students/apply-outside-uk](http://www.ukba.homeoffice.gov.uk/visas-immigration/studying/adult-students/apply-outside-uk) for up-to-date information on how much money you need to show.

The information in this handbook is general as there are changes that are still being implemented. Please check the UK Border Agency (UKBA) websites below which will always have the most up-to-date information. If you have any specific questions after reading this booklet and the website information, please contact the International Student Officer.

[www.ukba.homeoffice.gov.uk](http://www.ukba.homeoffice.gov.uk)

Under the PBS, the University of Winchester will be obliged to report to the UKBA any student who does not enrol on their course, suspends, withdraws or defers from their course, moves to another institution, does not attend the course or is withdrawn by the University for any reason.

It is a criminal offence to switch to another institution without first applying for and obtaining permission to do so from the UKBA. It is also essential that you inform the University of all updates to your personal information including changes of address, changes in personal circumstances and course information. Tier 4 students are also advised that they are not allowed to claim any public funds during their time in the UK.



# Do I need a visa?

## **Visa nationals**

All visa nationals **MUST** obtain a visa (entry clearance) to come to the UK. You will not be allowed to enter the UK if you have not obtained this. If you are coming for a course of up to six months (eleven months for English language courses) and do not wish to take a further course or work while you study, you should apply for entry clearance at the British Embassy as a **student visitor**.

It is essential to check the UKBA website [www.ukba.homeoffice.gov.uk](http://www.ukba.homeoffice.gov.uk) for new information on entry clearance and visas before you travel to the UK. The UK Council for International Student Affairs has a very useful website for information on applying for a visa. Go to: [www.ukcisa.org.uk](http://www.ukcisa.org.uk) > Immigration, including visas > What immigration requirements must I meet to be a student in the UK?

To find out if you are a Visa National, you can use the following link:

[www.ukba.homeoffice.gov.uk/policyandlaw/immigrationlaw/immigrationrules/appendix1](http://www.ukba.homeoffice.gov.uk/policyandlaw/immigrationlaw/immigrationrules/appendix1)

## **Non-visa nationals**

If your country of citizenship is not listed on the abovementioned lists and you are not an EU/EEU national, then you are a non-visa national.

Non-visa nationals who wish to come to the UK for more than six months **MUST** also obtain a Tier 4 (entry clearance) visa prior to entering the UK. (See Visa Nationals section above for more information). Non-visa nationals coming on English language programmes of up to eleven months duration may choose to apply for entry clearance as a student visitor instead of a Tier 4 visa student at the British Embassy in their home country.

If you wish to come for a maximum of six months, you can travel without entry clearance and ask to be admitted on arrival as a **student visitor**. Please make sure that you are clear that you wish to be admitted as a **student visitor** rather than just a visitor. Please be prepared to show the Immigration Officer your offer letter, proof of funds to support you during your stay in the UK, your accommodation arrangements and any other relevant documentation such as academic certificates and/or transcripts. The 'Student Visitor' visa does not permit you to work during your stay, nor can it be extended or changed to another visa. If you wish to do any of these, you must apply for a Tier 4 student visa before coming to the UK, or, if you are already here, you will have to go back to your home country to apply for the appropriate entry clearance (visa).

## **EU/EEA nationals**

European Economic Area (European Union countries plus Iceland, Liechtenstein and Norway) nationals do not need a visa (entry clearance) to study in the UK.

Your husband, wife, or civil partner and your children under 21 can enter freely if they are also EEA or Swiss nationals. If they are non-EEA nationals, they should apply at the British Embassy where they are living for an EEA family permit before travelling to the UK. See [www.ukcisa.org.uk/student/eea.php](http://www.ukcisa.org.uk/student/eea.php)

## Restrictions on bringing meat and food in to the UK

If you are planning to bring foodstuff with you, please be aware that some food products especially meat, fish and other animal products from outside the EU cannot be brought into the UK. For full details please check: [www.defra.gov.uk/food-farm/food/personal-imports](http://www.defra.gov.uk/food-farm/food/personal-imports) where there is a useful checklist: <http://dontbringmeback.direct.gov.uk/index.html>

There are strict limits on the amount of alcohol and tobacco you can bring. You are not allowed to bring unlicensed drugs or offensive weapons. For full details please check the following Revenue and Customs website: [www.hmrc.gov.uk/customs/arriving/arrivingnoneu.htm](http://www.hmrc.gov.uk/customs/arriving/arrivingnoneu.htm)

## Money on arrival

You will need approximately £200-£250 in British currency on arrival in the UK, more if you are travelling by taxis and other public transport. Do not carry any more than this in case it gets lost. It is also advisable to bring some travellers' cheques with you for emergencies; they can be cashed at airport bureaux de change offices and in banks. It may take up to 3 weeks to open a UK bank account so be prepared with cash and traveller's cheques until then. You can also withdraw money from ATMs using your credit or debit card.

## Arrival in the UK

### **Please arrive on Thursday 12 January 2012**

Your university accommodation will only be available from that date. If you are planning to arrive early, you will need to find a hotel or bed & breakfast locally. See the Winchester Tourist Board details at the end of this guide. Tier 4 students on courses of six months or longer may enter the UK up to one month before the start date of the course. If your course is less than six months long and is not a course to prepare you for a main programme of study you may enter the UK only up to seven days before the start date.

On arrival in the United Kingdom, you may be asked by immigration officials at the airport to provide the documentation listed in the "To bring" list.

**Please complete the online Airport Pick-Up Booking Form for our free bus service which will be offered from Heathrow airport only to the University campus on Thursday 12 January 2012. The bus will leave Heathrow at approximately 10.30 and 15.30. There will be International Student Buddies at Heathrow to meet and welcome you.**

If you need to travel independently to Winchester, it can take 2-4 hours to reach Winchester from either Heathrow or Gatwick. Travel from the airport to Winchester is easy – read the details in the following table:

National Express Coach	From Heathrow Airport	From Gatwick Airport
National Express coach website: <a href="http://www.nationalexpress.com">www.nationalexpress.com</a>	You need to take a coach (most are number 032) from Heathrow airport to Winchester. The coach leaves from Heathrow Central Bus Station. Just ask for directions from the Information desk in the terminal.	You need to take a coach from Gatwick Coach station to Heathrow airport. Just ask an airport official for directions if it is not clear. Change at Heathrow for coach (as left) to Winchester.
Approx length of journey	1 hour 30 minutes	3-4 hours
Approx coach times	Coaches every 2 hours	Coaches every 2 hours
Where can I buy a ticket?	Tickets can be purchased from the information desk in each terminal or it may be possible to pre-book online at the website above.	Tickets can be purchased from Gatwick Coach station main desk or it may be possible to pre-book online at the website above.
Approx cost of journey	Single fare: £16	Single fare: £25

Please be aware that services are not as frequent in the evening and all day on Sunday. Journeys in this instance may also take longer and stop at more places. You can also look on the National Express website for coach services from other UK airports.

### Taxis

If you plan to travel by taxi you could try contacting City Taxis in Winchester. Tel: 44-1962-841212; Fax: 44-1962-844435; Email: [citytaxis2011@gmail.com](mailto:citytaxis2011@gmail.com) Their current fares are £75 from Heathrow to Winchester and £95 from Gatwick to Winchester. Please bring sufficient cash to pay the driver; there may be an additional parking charge if the driver has had to wait a long time for you.

### Trains

If you are arriving by ferry/Eurostar or into another UK airport, travelling by train to Winchester will probably be your best option. For more information see [www.nationalrail.co.uk](http://www.nationalrail.co.uk)



## Arriving at the University

Please arrange to arrive in Winchester on the set arrival date – **Thursday 12 January 2012**. If you have not arrived on our free Heathrow pick-up service, please get a taxi to the university from either the Winchester railway or bus station. The journey will take between 5 and 10 minutes and will cost approximately £5.

Ask the taxi driver to take you to the **Main Reception, Sparkford Road** where you will collect your key. Look for an International Student Buddy who will welcome you and help you to settle in. If you are living in other University accommodation, you still need to go to Main Reception to collect your keys. There will be a shuttle bus service to take you from Main Reception to your accommodation elsewhere. If you are arriving after 18.00 hours, please report to the Site Steward using the telephone at Main Reception who will give you your key.

Please advise the **International Student Officer** of your anticipated arrival date and time by emailing these details to: **Sunita.Martin@winchester.ac.uk** This will help us to ensure that an International Student Buddy is on hand to help you out. If you do not have access to email, please see page 16 for fax and telephone details.

## Orientation programme

An orientation programme for all international and EU students will be held on **Friday 13 January 2012**. Your attendance is strongly recommended. During the orientation you will:

- be welcomed to Winchester and to the University
- have your visa checked and a copy made prior to enrolment
- have the originals of your academic qualifications checked
- enrol with the University, your Faculty and your programme of study (all students should register online prior to arrival but will still need to enrol in person)
- participate in information sessions on aspects of life in the UK
- receive important and essential information about life at Winchester, culture shock, the computer systems, email, and much more
- meet your International Student Officer and fellow students
- meet your tutors and support staff
- pay your fees and accommodation bills
- receive your student ID card
- register with a doctor
- register with the police if required to do so on your visa
- find out how to open a bank account
- have a tour of the campus
- be able to settle in and familiarise yourself with your new environment before lectures start
- and importantly, make friends and have fun!

Classes will begin in the week starting Monday 16 January 2012.

## Making contact with home

We are making arrangements to provide every new student with a free SIM card which can be used in an 'unlocked' mobile/cellphone.

This SIM card will have a small amount of credit on it which will be sufficient to send several texts (SMS) or make a quick call home. It will be given to you in your Welcome Pack on the university bus when travelling from Heathrow or from the International Student Buddies on campus for those arriving at the university independently. If you subsequently wish to keep using the SIM card, you can register with the company online and purchase additional credit. The University takes no responsibility whatsoever for your use of the SIM card, the network provider and for any contract you may enter into with the company.

You will be also be able to phone home using pay phones on the campus, and use the internet from direct-access computers on campus. You will be offered a guest ID to log on to our internet system until your University email address has been activated after enrolment.

Pre-paid phone cards, sometimes called calling cards, are a cheap and easy way to make long distance overseas phone calls from your home or mobile phone. There is a variety of international calling cards available that can be purchased from the Post Office and many newsagents. All cards will carry clear instructions for you to follow when making your call from a pay phone or landline telephone.

Some students find that the option of a mobile telephone, although sometimes more expensive, provides a convenient method of communication. There are a number of mobile phone shops in Winchester and you may be able to find a special deal for phoning overseas if you decide not to use the SIM card provided upon arrival.

You can also find cheap rates to make international calls from your mobile phone by searching online. **[www.cheapestinternationalcalls.com](http://www.cheapestinternationalcalls.com)** is one example, and there are many others.

Students can access Skype from computers on campus but will need their own headphones and microphone.

# Finances

If you are receiving funding from overseas, your financial sponsor will normally calculate the amount of funding you require at the current exchange rate. As exchange rates fluctuate, sometimes dramatically, we strongly recommend you exchange such funding into sterling (pounds and pence) as soon as you receive it. Make sure you put this money straight into your bank in order to avoid carrying large amounts of cash around with you.

Please see the Finance Matters leaflet in the Induction Pack for full details about tuition fees and payment of invoices.

If you have a financial query, the Finance Office on the first floor of the Main Building is open from 10.00 to 15.00 Monday to Friday. Any queries regarding your payments can be discussed with our Credit Controller on + 44 (0)1962 827265. Annual tuition fees for full-time international students should be paid at the beginning of the first term. All invoices should be paid promptly.

Please note if you are a Visiting (Study Abroad) or an Erasmus student, you are required to pay your tuition and accommodation fees before your arrival on Thursday 12 January 2012 (an invoice will be sent to you in due course).

## Transferring money to the UK

Bringing money into the UK is straightforward if you plan ahead. There are a number of ways of getting money into the country and the various options open to you are listed below:

Credit card: most banks in the UK will accept MasterCard, American Express or Visa Cards. These can be used to withdraw cash from ATMs (cash dispensing machines) with an additional charge.

Traveller's cheques are very useful because they enable you to obtain money before you have organised a bank account.

Electronic transfer of funds – the easiest and quickest way to send money from a bank in your country to one in the UK. You can use this method once you have opened a bank account in the UK.

## Opening a bank account

International students do not always find it straightforward to open a bank account in the UK as different banks have different policies and apply different conditions. Please assume that it may take at least 2-3 weeks to open a UK bank account. Also, please make sure you have access to the money that you will need during this period by making financial arrangements similar to those you might make if you were on vacation.

If you intend to open a Bank account, please see the International Student Officer who will provide you with a letter confirming your course and address as this letter is required by most, if not all, banks.

## Part-time work in the UK

Students are advised that the main purpose of their stay in the United Kingdom is to study. However, you may wish to take up a part-time job while you are here. International students do not need to obtain a work permit in order to work but, providing your visa permits you to work, you are restricted to working either 10 hours or 20 hours a week during term-time, depending on the type of course you are studying. There is no restriction on the number of hours worked during vacation periods.

More information on how to find a part-time job will be given to you on arrival. Most EU students are not restricted in the number of hours they can work. However students from Romania and Bulgaria need a Workers Registration Certificate to work in the UK, and have a 20-hour per week restriction on work.

## Dependants

Postgraduate students on courses lasting 12 months or more, and government sponsored students are allowed to bring dependants. Only certain members of your family can apply to be in the UK as your dependants. If you are already in the UK with dependants, different rules will apply depending on whether you applied for your current student immigration permission under Tier 4 (General) of the Points Based System on or after 3 March 2010 or before 3 March 2010.

Please refer to the UKBA websites for the most up-to-date information or to UKCISA which publishes a very user-friendly information sheet: [www.ukcisa.org.uk/student/info\\_sheets/your\\_family.php](http://www.ukcisa.org.uk/student/info_sheets/your_family.php)

You may also contact the International Student Officer for enquiries specific to your situation.



## Accommodation

All international students are guaranteed accommodation for the duration of their studies, provided they have applied for a room by **1 August** each year. EU students receive the same guarantee as home students, which means they are guaranteed accommodation for their first year, provided they have accepted Winchester as their first choice University and apply by 1 August in their year of entry. Students starting in January 2012 will have to apply by 16 December 2011.

You should already have received the housing guide in your offer pack.

### **My postal address at University**

You will be notified of your full postal address by the University Housing Services department once your room has been allocated. Housing will send you an email with details of your room and your address in due course.

### **Where can my friends and family stay if they want to visit me?**

You can find information online at [www.visitwinchester.co.uk](http://www.visitwinchester.co.uk) for friends and family who may require accommodation in Winchester.

### **Insurance**

Your personal possessions, particularly valuable belongings - including bicycles - should be insured against theft, loss or damage. The University is unable to provide insurance for personal effects. You will be given information on how to insure your possessions during your orientation programme when you arrive or you can take this out before you come to the UK.

## PAT testing of electrical items brought into halls

All portable electrical items brought into the accommodation will be PAT tested for safety within a short time of your arrival. Exact details of when your items will be tested will be provided after you move in.

Each item tested will be given a sticker as evidence of the successful test. Any items that fail the PAT test and cannot be repaired will be removed from the residence and disposed of by the University Safety & Security Officer as they are not safe to be used. If your items are under warranty, you will be able to arrange to have them sent to the relevant place on your behalf.

Please see item 2.44 of the Student Residence Regulations.

There is a one off charge of £15 per student for PAT testing. This amount will be added to your accommodation invoice.

Portable equipment is defined as an appliance of less than 18kg in mass that is intended to be moved whilst in operation or an appliance which can easily be moved from one place to another. This includes computers, printers, TVs, hairdryers/straighteners, Hi-fi equipment (including decks), kettles, toasters, vacuum cleaners, plug in heaters, table lamps, microwaves etc. For more information see [www.pat-testing.info](http://www.pat-testing.info)

If your home electrical supply is not earthed and is of a lower voltage you will need an adaptor so that it is compatible with the UK electrical supply. You will be advised of this when your equipment is tested and you will be supplied with a suitable adaptor. These adaptors can also be obtained from Media Resources at a cost of £5.00. Some of your equipment will not be surge protected and so will not be suitable to be used with the common adaptor. The adaptor for this equipment will cost approximately £30 - £40 from any electrical store.

## Computer operating systems and IT support

If you are bringing your laptop, please be aware that your operating systems, e.g. Windows, should be original versions and preferably in English. If the language is not English, you will experience difficulties in obtaining IT support in the event of a breakdown. For example, the IT technicians will not understand the error messages, and you may not be able to accurately translate those messages for them.

## Health

### **The National Health Service (NHS)**

The NHS is the UK's state health service. It provides free treatment for UK residents through a wide range of health care services. The National Health Service provides medical treatment through three main routes:

- **General Practitioners (GPs/Physicians):** usually the first point of contact for medical treatment
- **Hospitals:** you may be seen as an in-patient (where you stay in the hospital for treatment) or as an out-patient (where you visit the hospital each time)
- **Accident and Emergency (A&E) department:** This department is open 24 hours a day and deals with patients needing emergency treatment.

International students studying for six months or longer are entitled to free health care from the NHS (excluding dental treatment), from the beginning of their studies. Your spouse and children under the age of sixteen will also be entitled to NHS treatment.

If your programme is for less than six months, you are strongly advised to take out health insurance from a reputable company, to cover yourself and your dependants.

It is recommended that all International and EU students register with a doctor and this will be arranged for you.

### **Meningitis Vaccine**

All first year students should be vaccinated against Meningitis C, a serious and potentially life-threatening disease. Please make arrangements to receive this vaccine before coming to the University.

# Students with disabilities or learning differences

If you are an International or EU student with a disability, you must contact the Head of Disabilities and Learning Diversity before arriving in the UK to discuss individual support requirements and for support provision to be arranged. You will be required to provide evidence of your disability in advance of your arrival. You are advised to seek funding from your home country to cover the cost of any non-academic support that your disability may incur.

Please contact Lesley Black, our Head of Wellbeing, on 01962 827439 (internally 7439) or by email [Lesley.Black@winchester.ac.uk](mailto:Lesley.Black@winchester.ac.uk) to arrange an appointment.

## Academic life in the UK

You may find, as many international students do, that the teaching methods used by lecturers can be very different from any you have been used to. The relationship between staff and students is often more relaxed and informal and high importance is placed on students' abilities to take responsibility for their education and organise their own time. The UK system assumes that students will develop through independent learning.

Degree programmes consist of a series of lectures, seminars and tutorials. In addition to timetabled activities, much emphasis is placed on private study and you will be expected to spend at least as much time studying on your own as being taught.

The website [www.prepareforsuccess.org.uk](http://www.prepareforsuccess.org.uk) is an excellent resource for international students to prepare for academic life, and to improve your English language skills if necessary. There are interactive activities such as 'Understanding course assignments', 'Differences in University Study', 'Academic Writing at University' and many more. There is also a section on 'Adapting to a new Life', which deals with cultural challenges.

### **Language Development**

If English is not your first language, we offer in-sessional support to help you develop your language and study skills. Workshops, drop-in sessions, specialist modules and individual tutorials are available free of charge to students registered at the University of Winchester throughout the academic year. Further details will be given to you at your orientation.



## Financial budgeting

A useful web-based tool has been developed to help international students to arrive better-prepared for their financial needs. This free tool is called International Student Calculator and can be found on [www.studentcalculator.org.uk/international](http://www.studentcalculator.org.uk/international)

To apply for your visa, in addition to tuition fees, you will have to demonstrate that you have access to living or maintenance funds of £600 per month of study for courses less than 12 months, or £5400 for courses of 1 year or more. That is a useful figure on which to base your budgeting, although individual needs will of course vary greatly.

## Have a safe journey!

It is very important that you read ALL of this International Handbook. We do hope this information will be useful to you as you plan your journey and as you prepare to live and study in the UK. If you have further questions or are unsure of anything, please do not hesitate to contact us. We are here to help and will be happy to do so.



## Useful information/contacts

### **UKCISA**

(UK Council for International Student Affairs)

Tel: +44 (0) 20 7288 4330

Fax: +44 (0) 20 7288 4360

[www.ukcisa.org.uk](http://www.ukcisa.org.uk)

### **Foreign & Commonwealth Office**

[www.fco.gov.uk](http://www.fco.gov.uk)

### **UK Border Agency**

[www.ukba.homeoffice.gov.uk](http://www.ukba.homeoffice.gov.uk)

### **Embassy List**

[www.embassyworld.com/embassy/directory.htm](http://www.embassyworld.com/embassy/directory.htm)

### **DirectGov – financial information for EU students**

[www.direct.gov.uk/en/educationandlearning/universityandhighereducation/studentfinance](http://www.direct.gov.uk/en/educationandlearning/universityandhighereducation/studentfinance)

### **The British Council**

[www.britishcouncil.org](http://www.britishcouncil.org)

[www.educationuk.org](http://www.educationuk.org)

### **Universal Currency Converter**

[www.oanda.com](http://www.oanda.com)

### **Interfaith Network for UK**

[www.interfaith.org.uk](http://www.interfaith.org.uk)

### **Winchester Tourist Board**

for Hotel and Bed & Breakfast accommodation in Winchester

[www.visitwinchester.co.uk](http://www.visitwinchester.co.uk)

### **National Health Service (NHS)**

[www.nhs.uk](http://www.nhs.uk)

## University of Winchester

### staff contacts

#### **University of Winchester Main Switchboard**

Tel : +44 (0) 1962 841515

[www.winchester.ac.uk](http://www.winchester.ac.uk)

#### **International Student Officer**

Tel: +44 (0) 1962 827482

Fax: +44 (0) 1962 827515

Email: [Sunita.Martin@winchester.ac.uk](mailto:Sunita.Martin@winchester.ac.uk)

#### **Student Services**

Tel: +44 (0) 1962 827341

Fax: +44 (0) 1962 827515

Email: [student.services@winchester.ac.uk](mailto:student.services@winchester.ac.uk)

#### **Housing Services**

Tel: +44 (0) 1962 827301

Fax: +44 (0) 1962 827264

Email: [Housing@winchester.ac.uk](mailto:Housing@winchester.ac.uk)

#### **Finance Office**

Tel: +44 (0) 1962 827275

Email: [Lisa.Clark@winchester.ac.uk](mailto:Lisa.Clark@winchester.ac.uk)

#### **English Language Teaching and Support Unit**

Tel: +44 (0) 1962 827422

Email: [Ivan.Preston@winchester.ac.uk](mailto:Ivan.Preston@winchester.ac.uk)

#### **Course enquiries and applications for CAS**

Tel: +44 (0) 1962 827234

Email: [course.enquiries@winchester.ac.uk](mailto:course.enquiries@winchester.ac.uk)

#### **International Recruitment**

Tel: +44 (0) 1962 827023

Email: [international@winchester.ac.uk](mailto:international@winchester.ac.uk)

#### **Visiting and Exchange Student Officer**

(American Visiting/Exchange Programme and Erasmus)

Tel: +44 (0) 1962 827582

Email: [Sarah.Hanford@winchester.ac.uk](mailto:Sarah.Hanford@winchester.ac.uk)

**University Chaplaincy**

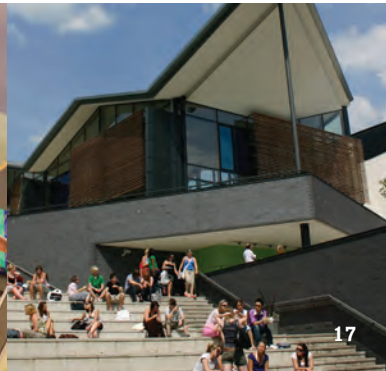
Tel: +44 (0) 1962 827063

Email: [Chaplaincy@winchester.ac.uk](mailto:Chaplaincy@winchester.ac.uk)

**Disabilities**

Tel: +44 (0) 1962 827439

Email: [disabilities@winchester.ac.uk](mailto:disabilities@winchester.ac.uk)





THE UNIVERSITY OF  
WINCHESTER

**International Student Handbook January 2012**

The University of Winchester

Winchester

Hampshire

SO22 4NR

Tel: +44 (0) 1962 841515

Fax: +44 (0) 1962 827515