

University of Winchester

Conferences & *Events*



UNIVERSITY OF
WINCHESTER
Conferences & Events

Your Event, Our *Expertise*

Let's start planning your next event:
conferences@winchester.ac.uk

Welcome to Conferences & Events

At the University of Winchester

Flexible spaces, thoughtful planning and a dedicated team ready to deliver conferences, corporate events, residential groups and celebrations that run seamlessly.

Your Event, Our Expertise.

Index

Welcome & Why Choose Us	2
Our Key Facts	3
Two Quarters	4
Flagship Venues	6
Additional Event Spaces	7
Stay with us	8
Catering	9
Event Packages	10
Additional Equipment	11
Equality & Sustainability	12
Discover Winchester	13
Who we are	14
Frequently Asked Questions	15

Our Key Facts

Venues and Facilities



Two large auditoriums for conferences and keynote sessions



From small meetings to 300+ delegate conferences



Versatile spaces for every event type



On site technical support



Integrated high-quality AV in every space

Service and Experience



Expert support from start to finish



A trusted venue for UK and international events



Working towards Green Meetings accreditation



High quality catering for all dietary requirements



A reputation built on exceptional service

Location and Accessibility



Walking distance to Winchester city centre



Southampton Airport just 15 minutes away



15 minute walk to the train station



Direct trains to London every 30 minutes



Two Quarters

One *connected* campus

At the University of Winchester, our West Downs and King Alfred quarters sit just a short walk apart, giving you the flexibility to use both as one.

Each offers a distinct setting, from the contemporary design of West Downs to the established character of King Alfred, named after the historic king and rooted in the University's heritage. Together, they create a connected campus that is easy to navigate and ready to support your event from start to finish.

[View campus map](#)

[View our venues](#)

Flagship Venues



The Stripe Complex

Built for large conferences and academic events, the Stripe Building offers a versatile setting at the heart of King Alfred Quarter.

Building Highlights

- 300 capacity auditorium
- 196 seat tiered lecture theatre
- Large foyer for networking and exhibitions
- Flexible breakout and poster spaces
- Steps from accommodation and dining
- Biodiversity green roof

Designed For

- Conferences
- Poster sessions
- Breakout-heavy events
- Workshops and seminars
- Hybrid events and live streaming

360° View



The West Downs Centre

Designed to make an impact from the moment you arrive, the West Downs Centre is our flagship venue for conferences, exhibitions and high-profile events.

Building Highlights

- 230 capacity auditorium
- 5 breakout spaces with panoramic views
- Up to approximately 550 m² of foyer, lounge and gallery space
- Private courtyard garden
- Café and bar facilities
- BREEAM Excellent sustainability credentials

Designed For

- Conferences
- Large lectures
- Award ceremonies
- Exhibitions
- Networking and drinks receptions

360° View



Additional Event Spaces

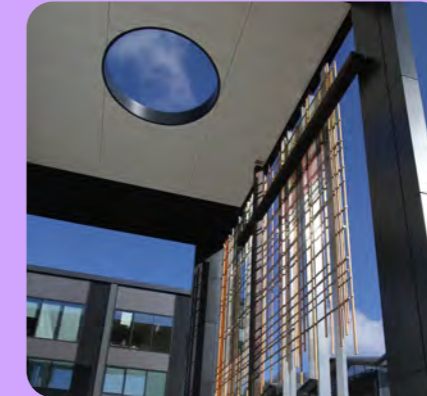


St Alphege & St Edburga Buildings

Designed For

- Breakout sessions
- Workshops
- Training days
- Parallel sessions

360° View



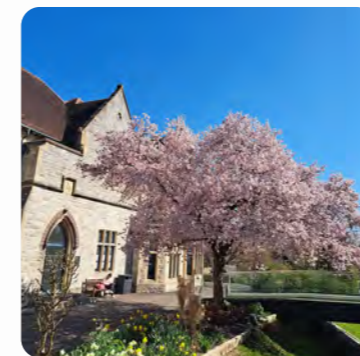
Winchester Business School

Designed For

- Gala dinners
- Weddings Receptions
- Formal receptions

- Meetings and workshops
- Breakout sessions

360° View



Winton Building

Designed For

- Small meetings
- Training sessions
- Team meetings
- Short meeting saver packages available



King Alfred Centre

Designed For

- Catering and receptions
- Awards dinners
- Terrace receptions
- Large scale dining and flexible events (330m²)



Paul Chamberlain Building

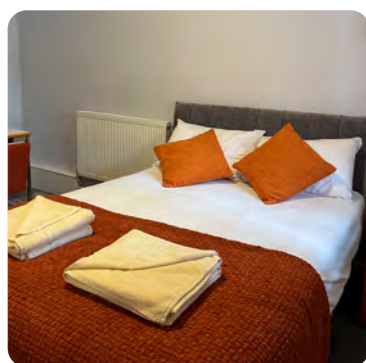
Designed For

- Creative sessions
- Performance workshops
- Rehearsals
- Performances, showcases

Stay with us

Stay just minutes from the heart of historic Winchester with comfortable, convenient accommodation on campus.

Whether you are visiting for a conference, summer programme or group stay, our range of options offers a practical and welcoming base within walking distance of the city centre.

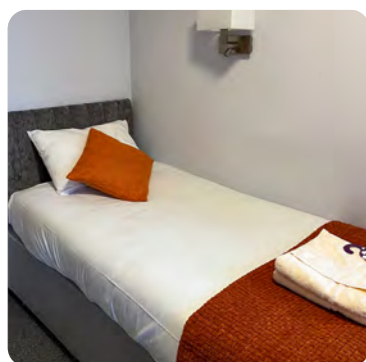


All-Year Guest Rooms

360° View

£56.60 - £67.00

Our all-year guest rooms offer comfortable en-suite accommodation just a short walk from Winchester city centre. Ideal for speakers, visitors and short stays, with Wi-Fi, workspace areas and campus facilities close by.



Summer Accommodation

360° View

From £40.00 - £54.00 Room Only

From June to September, Burma Road and Queens Road provide affordable single rooms for conference delegates, individuals and longer stays. A convenient campus base during the busy summer event season.



Youth Group Accommodation

POA

West Downs Student Village offers practical accommodation for youth groups, summer schools and residential programmes. Single rooms within shared flats, communal kitchens and optional catering make it a flexible choice for group stays.

Catering

Catering That Works Around Your Day

Great catering helps an event flow naturally. Our team will help plan food and refreshments that support the rhythm of your day, keeping delegates refreshed and energised.

From working lunches and conference dining to drinks receptions, celebration dinners and evening bar service, we offer a wide range of menus to suit different event styles and budgets. For special occasions we can also create something more bespoke.

Our chefs cater for a wide range of dietary requirements, with most dishes easily adapted so every delegate enjoys a considered and inclusive dining experience.

Get in touch with our team to view our sample menus.



Event Packages

Thoughtfully designed options that bring everything together for your event.

Residential Conference

Best for multi days events

The complete conference experience with accommodation on campus

Overnight accommodation

Full English breakfast

Mid-morning tea & biscuits

Evening meal with coffee

AV equipped room

Syndicate room access

**From £123.80
per delegate**

West Downs **£123.80**

Burma Road/Queens Road **£147.55**

Minimum 15 delegates

Day Conference

Most popular

Everything you need for a smooth and successful conference

Arrival tea & coffee

Mid-morning tea & biscuits

Two-course buffet lunch

Afternoon tea & cakes

AV equipped room

Water for speakers

**£55.25
per delegate**

Minimum 15 delegates

Short Meeting

Best for shorter meetings

Ideal for half day meetings and team sessions

5-hour room hire

Arrival tea & coffee

Working lunch

Afternoon tea & biscuits

**£33.00
per delegate**

15-50 delegates

Minimum spend **£480**

Extend to full day for **+£5pp**

Agency Commission and Exhibitor Rates

Commission is payable to recognised agencies on published Day Delegate and Residential Delegate package rates. Exhibitor packages are available at a 10% discounted rate plus VAT.

Additional Equipment

Our venues are fully equipped to support everything from small meetings to large conferences and hybrid events.

All teaching spaces include a teaching desk for simple laptop connectivity, while our in-house AV team is available to support more complex technical requirements.

Whether you are hosting a workshop, lecture or multi stream conference, our team will help ensure the right technology is in place for your event.

Equipment options include:

- Flipchart pads and pens
- Portable screens
- Microphones and sound systems
- A1 poster boards
- Lighting options
- Hybrid and video conferencing solutions
- Dedicated AV support for conferences of any scale

Equality & Inclusivity

At the University of Winchester we are committed to creating an environment where all delegates, organisers and guests feel welcome and able to participate fully.

Guided by the Equality Act 2010 and our Equality, Diversity and Inclusion Policy, we support accessible spaces, inclusive catering and thoughtful event planning.



Sustainability in Practice

Sustainability is embedded across our campus and reflected in the way events are delivered.

Alongside everyday practices such as drinking water fountains across campus and reusable cups for refreshment breaks, the University supports several wider sustainability initiatives:

- Zero waste to landfill, with non-recyclable waste sent to energy recovery
- Green Flag Award recognised campus grounds
- Hedgehog Friendly Campus supporting biodiversity and wildlife
- 100% zero carbon electricity since 2008
- 80% of the University vehicle fleet now electric

We are also working towards Green Meetings accreditation as part of our ongoing commitment to responsible and environmentally conscious events.



Discover Winchester

Just a short walk from campus, Winchester offers delegates a historic and vibrant city to explore between sessions.

With its iconic cathedral, characterful streets and excellent cafés and restaurants, the city provides a welcoming setting for informal networking and time to unwind after a day of events. Scenic walks along the River Itchen and the nearby South Downs National Park are also within easy reach.

With direct trains to London in under an hour and strong transport links across the south coast, Winchester is both well connected and easy to explore. Its compact layout and relaxed atmosphere make it an ideal destination for conferences and residential programmes.

[Visit Winchester](#)

How to find us

The University of Winchester is centrally located in Winchester, easily accessible by car, train, bus, or plane.

By Public Transport

Local buses connect surrounding towns and city centre stops near both King Alfred and West Downs Quarters.

Park & Ride services provide a simple, cost-effective option for visiting delegates.

By Train

Winchester Station is a 10–15 min walk from campus.

Direct trains from London Waterloo (55–60 min), Southampton (15 min), Basingstoke (20 min), Bournemouth (35 min).

By Car

Just off the M3 motorway.

1 hr from London, 20 min from Southampton, 45 min from Bournemouth.

On-campus parking is available to overnight guests on a first come, first served basis.

For day delegates, we recommend using the Park & Ride.

We can reserve up to 5 spaces for speakers and conference organisers.

By Plane

Southampton Airport – 15 min by car or train

London Heathrow approx. 1 hr by car

Airports have convenient onward rail connections to Winchester

Who we are

We are a small, experienced team based at the University of Winchester. From your first enquiry to event day and beyond, we are here to make things easy, personal and seamless.

You will work with the same people throughout your journey. No handovers, just honest advice and consistent support from a team who knows your event inside out. Whether you are planning a simple meeting or a full conference, we will help shape an event that works for you and feels genuinely well looked after.



Start the conversation with us today and discover how we can bring your event to life at the University of Winchester.

Gemma, Sarah, Georgina & Sarah
Your Conference & Events Team

Why choose us

From first enquiry to final applause, your dedicated Conference Coordinator will guide you every step of the way, making the process straightforward and stress free. Supported by experienced in-house teams working seamlessly behind the scenes, every detail is carefully planned and expertly delivered.

Catering

Working alongside your conference team to deliver refreshments, lunches, drinks receptions and event dining that complement the flow of your day.

Grounds Team

Maintaining the beautiful Green Flag Award winning campus, creating welcoming outdoor spaces for arrivals, networking and breaks.

Reception

Providing a friendly and professional welcome, helping delegates with directions, enquiries and support throughout the day.

Campus Management

Preparing teaching rooms and accommodation so every space is clean, safe and ready to welcome your delegates.

In House AV Team

Supporting presentations, hybrid conferencing, lighting and sound to ensure your event runs seamlessly.

Security

Providing 24-hour campus coverage to support the safety and wellbeing of all visitors.

Frequently Asked Questions

Availability

Some venues have limited availability during term time due to University teaching. Your conference coordinator will advise on suitable dates and spaces for your event.

When is the best time for residential conferences?

Our largest availability for accommodation and residential conferences is typically from June to September.

How far are you from Winchester city centre?

The University of Winchester is approximately a 10-minute walk from Winchester city centre and the train station.

Is parking available?

On campus parking is available for overnight guests at £1 per day on a first come, first served basis. Accessible parking and EV charging are available. For day delegates we recommend the Winchester Park and Ride, with up to five spaces reserved for speakers or organisers.

What bedroom types are available?

Our accommodation is primarily made up of comfortable single study bedrooms, with a small number of double guest rooms also available.

Can we bring our own catering?

External catering is not permitted. Our catering partners work closely with the conference team to deliver food and drink that complements your event.

Can we arrange a showround?

We would be delighted to show you around. Personalised campus tours can be arranged so you can meet your conference coordinator and explore our event spaces before booking.



UNIVERSITY
OF
WINCHESTER
Conferences & Events



Your Event, Our *Expertise*

Let's start planning your next event:

+44 (0) 1962 827322

conferences@winchester.ac.uk

winchester.ac.uk/About-Us/Conferencing-and-Facilities

